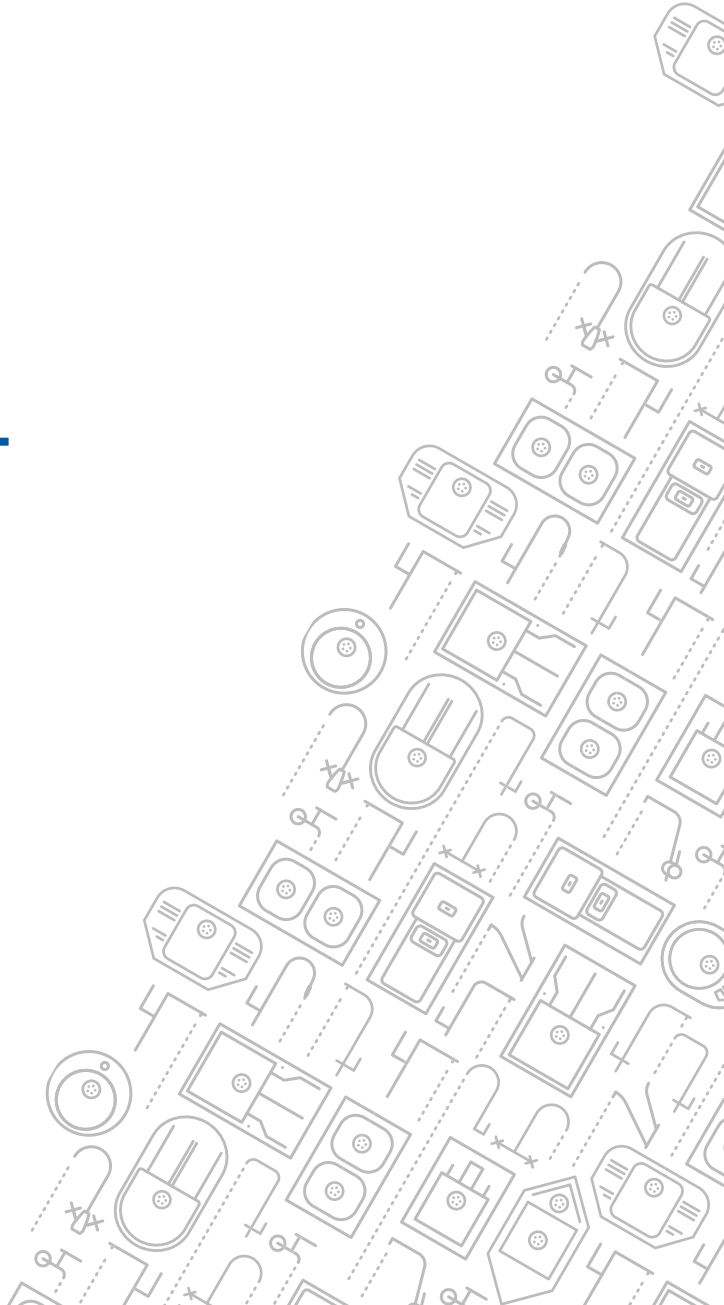
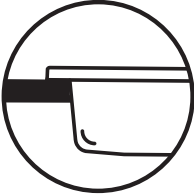
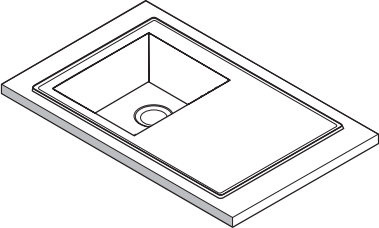
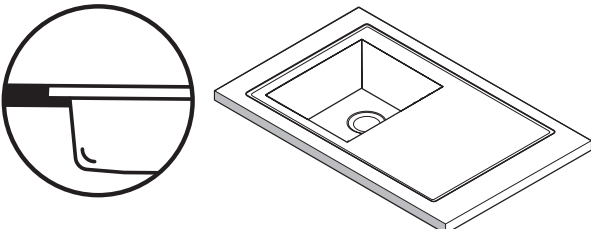
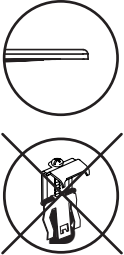
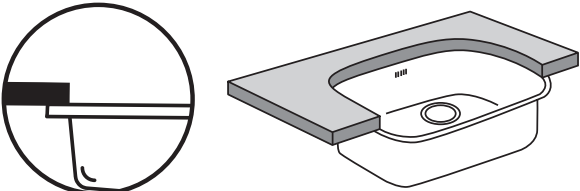
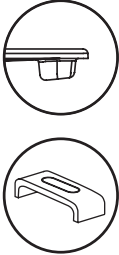


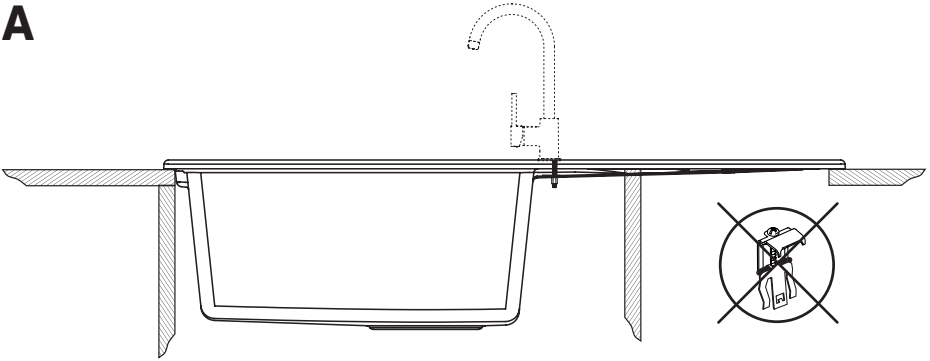
DŘEZ

Sinks

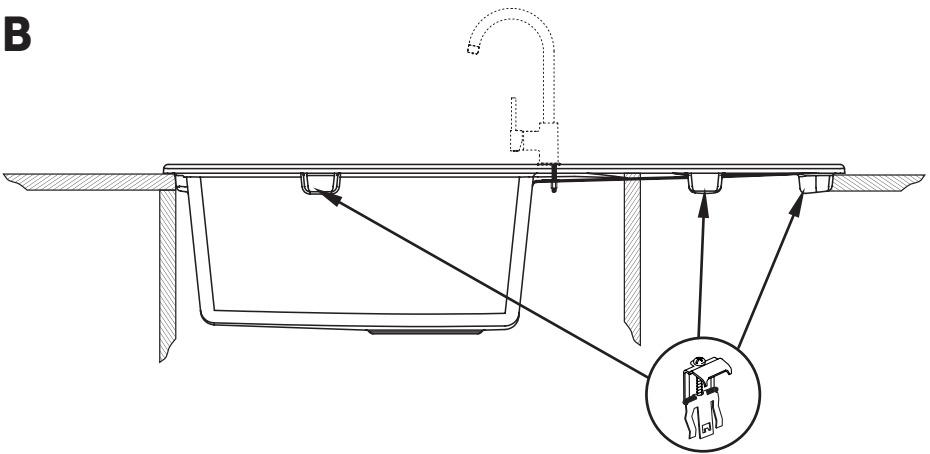


TYPY MONTAŻU/ Mounting types			
I.	WPUSZCZANY/ Inset	A	B
	 <p>The diagram shows a circular inset sink. On the left, a circular cross-section shows the sink's rim sitting flush with the countertop surface. On the right, a 3D perspective view shows the square sink basin with a central drain hole, set within a square frame that is flush with the countertop.</p>	 <p>Two circular icons show the inset sink rim flush with the countertop. Below them, two circular icons show the sink being mounted from underneath, with a diagonal line through each, indicating this is not a valid mounting method for this type.</p>	
II.	NA RÓWNI Z BLATEM/ Flush mount	A	
	 <p>The diagram shows a flush mount sink. On the left, a circular cross-section shows the sink's rim sitting exactly on the same level as the countertop surface. On the right, a 3D perspective view shows the square sink basin with a central drain hole, where the top edge of the sink is perfectly flush with the countertop.</p>	 <p>Two circular icons show the flush mount sink rim flush with the countertop. Below them, a circular icon shows the sink being mounted from underneath, with a diagonal line through it, indicating this is not a valid mounting method for this type.</p>	
III.	PODBLATOWY / Undermount	B	
	 <p>The diagram shows an undermount sink. On the left, a circular cross-section shows the sink's rim attached to the underside of the countertop, with the countertop surface above it. On the right, a 3D perspective view shows the sink basin with a central drain hole, where the countertop is mounted on top of the sink's rim.</p>	 <p>Two circular icons show the undermount sink rim attached to the underside of the countertop. Below them, a circular icon shows the sink being mounted from underneath, with a diagonal line through it, indicating this is not a valid mounting method for this type.</p>	

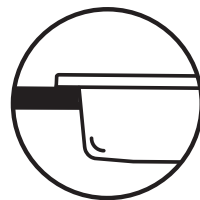
A



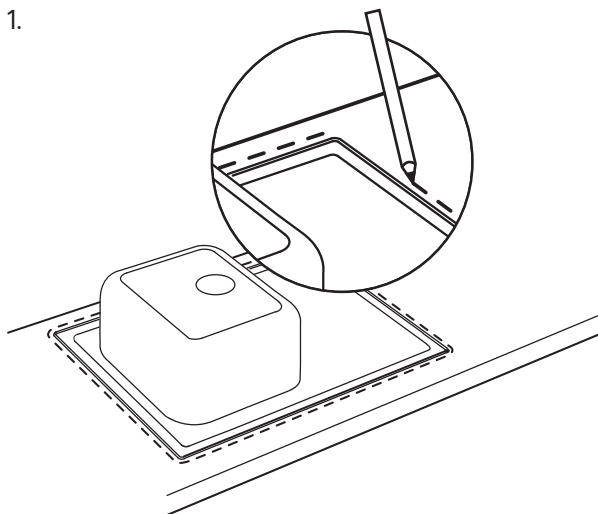
B



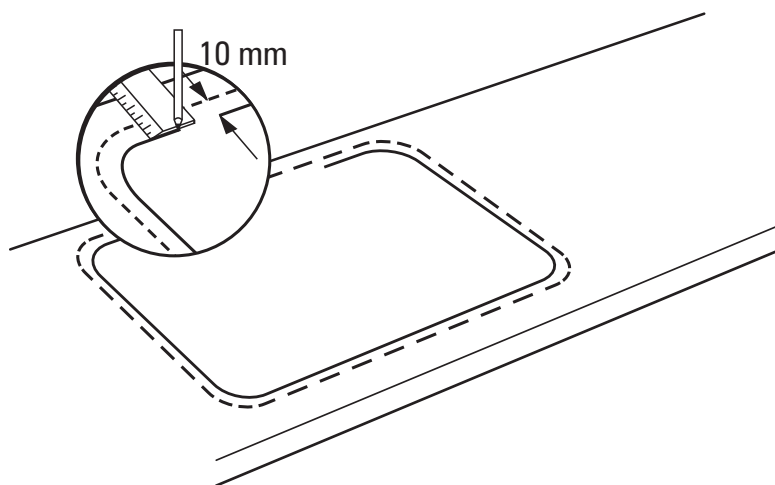
I. WPUSZCZANY/ Inset



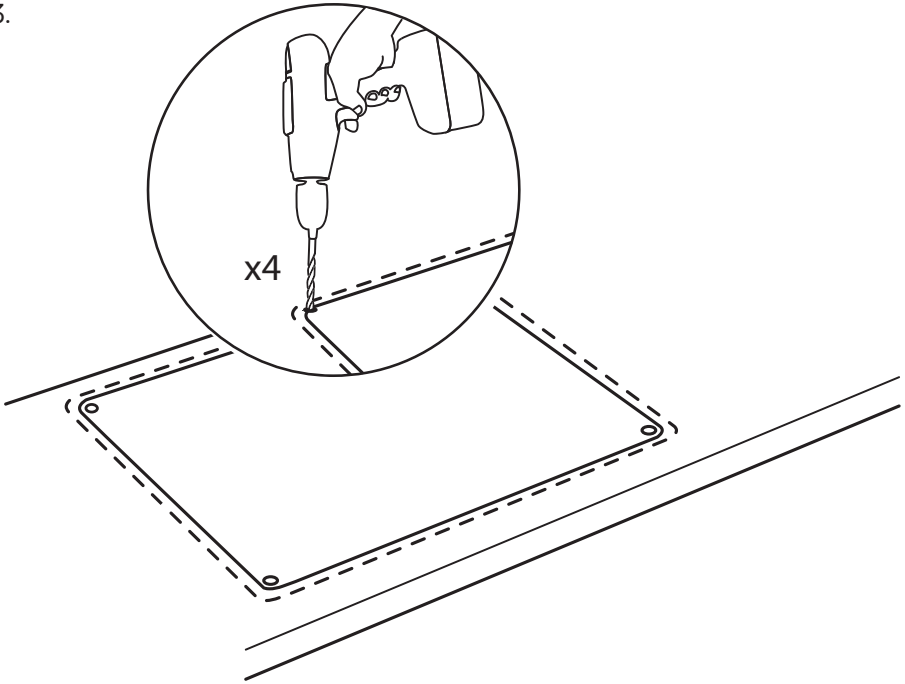
1.



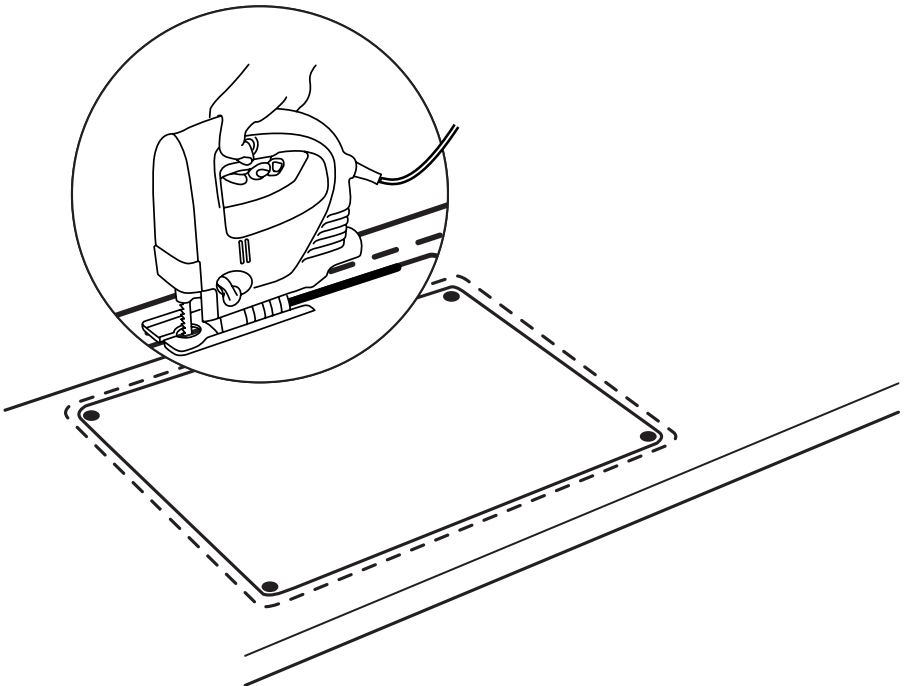
2.



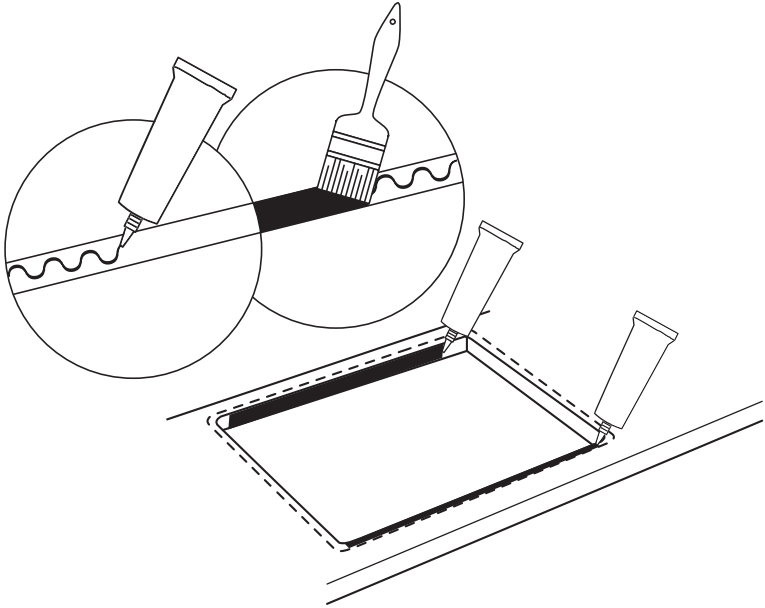
3.



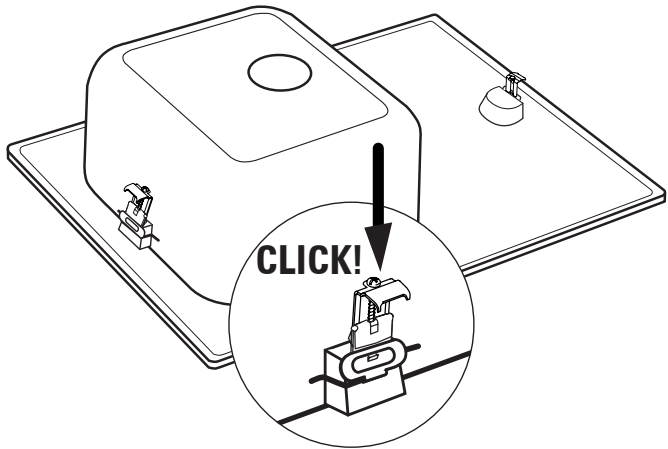
4.



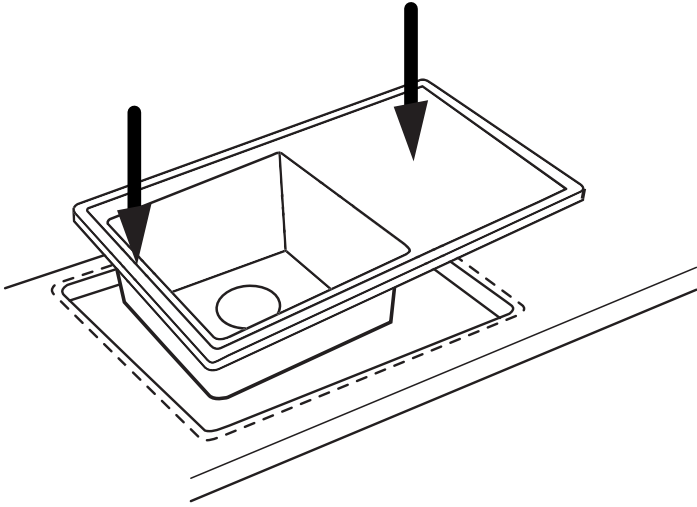
5.



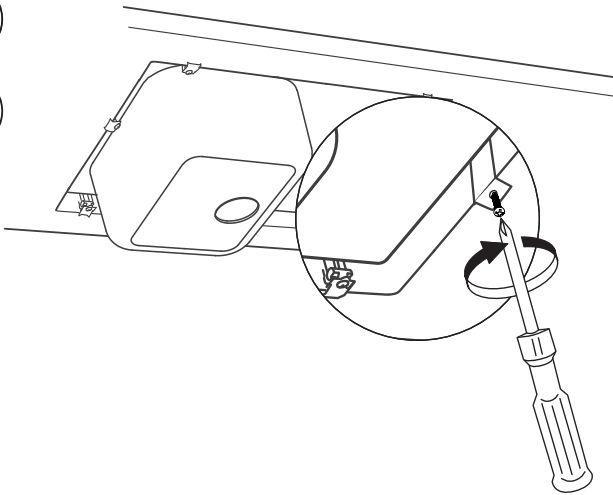
6B.



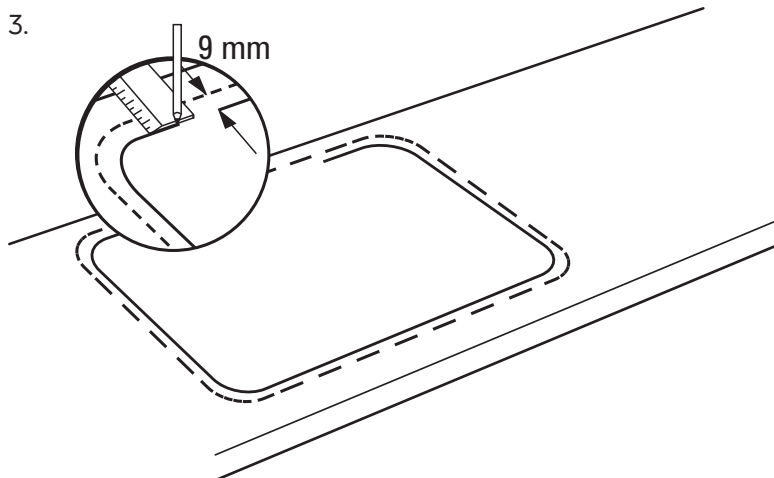
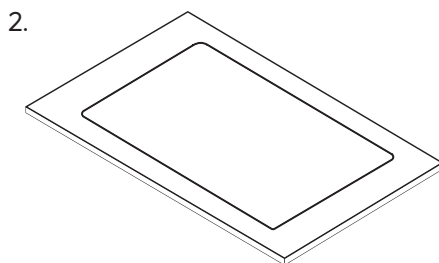
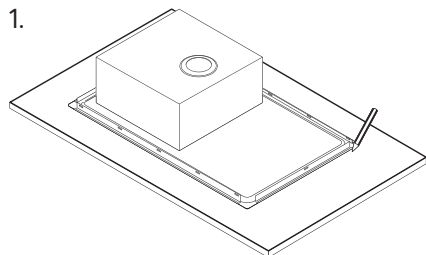
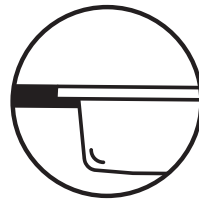
7.



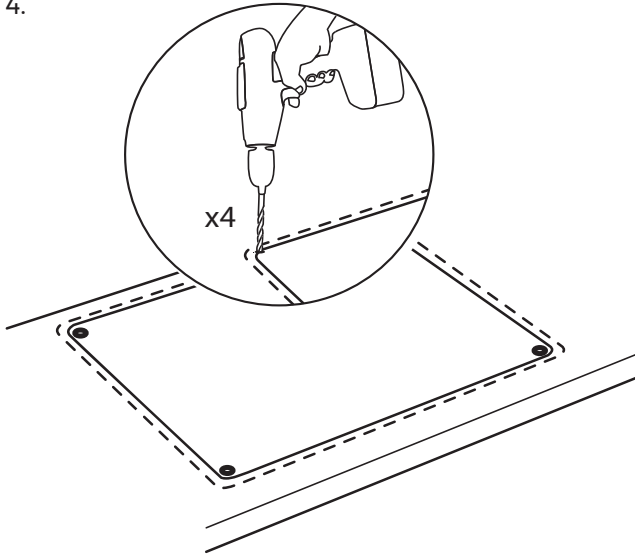
8B.



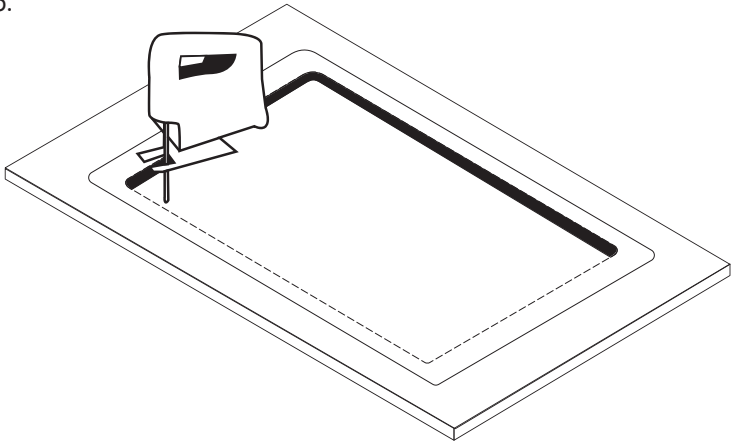
II. NA RÓWNI Z BLATEM/ Flush mount



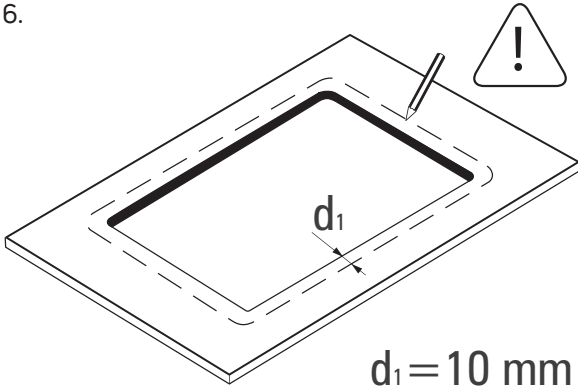
4.



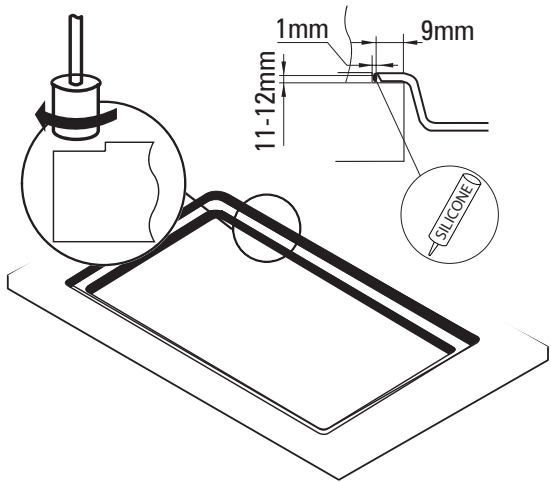
5.



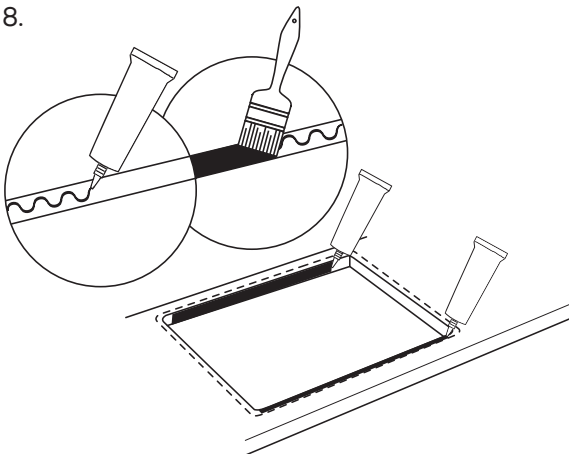
6.



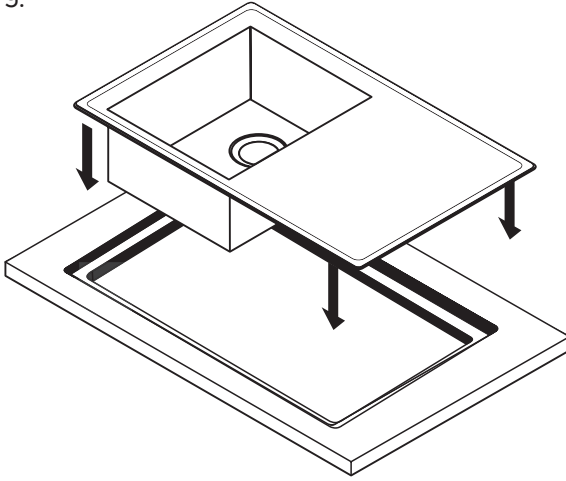
7.



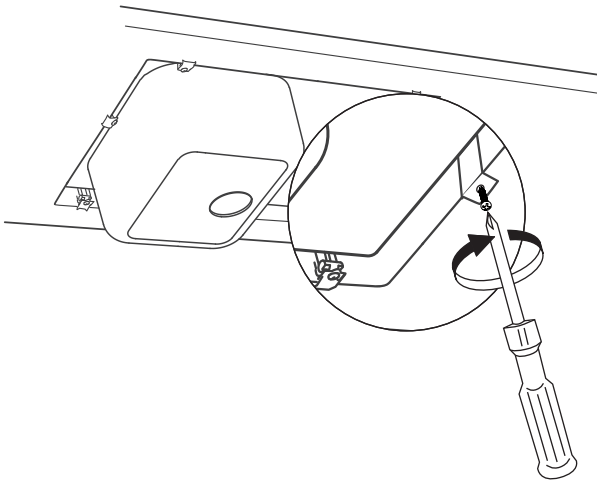
8.



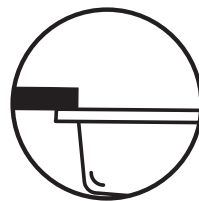
9.



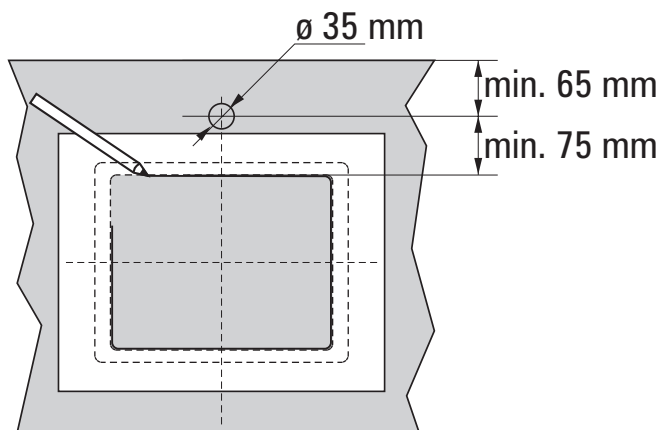
10.



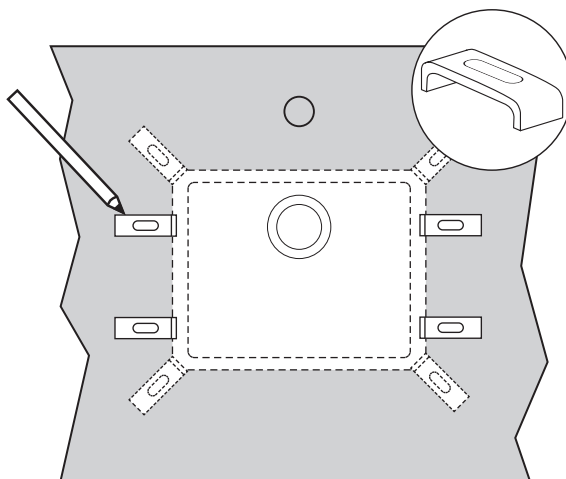
III. PODBLATOWY / Undermount

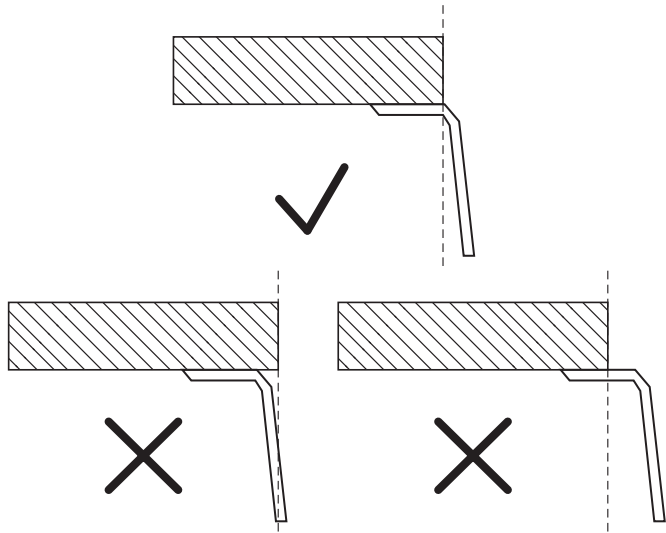


1.



2.





3.

